



Valley to Valley Trail Study

Project Background



VALLEY TO VALLEY TRAIL

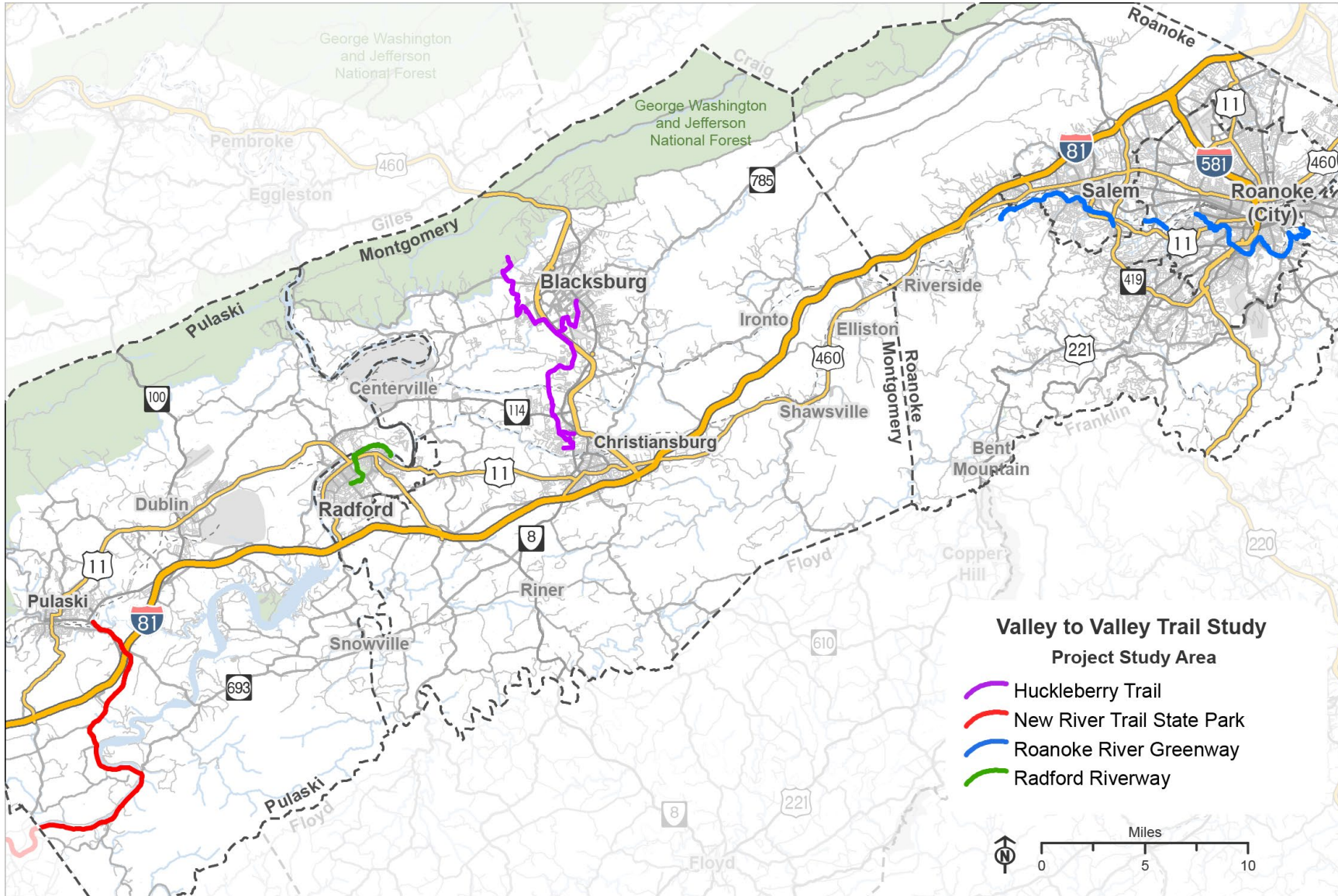
STUDY INTRODUCTION

Study Goals

- 1 Connect existing trails to form a cohesive network:
 - Roanoke River Greenway
 - New River Trail
 - Huckleberry Trail
- 2 Find short-term improvement opportunities
- 3 Identify potential routes for each segment and develop Recommended Alternatives



Study Area



Stakeholders

- **Roanoke Valley-Alleghany Regional Commission (RVARC)**
- **Roanoke Valley Transportation Planning Organization (RVTPO)**
- **New River Valley Regional Commission (NRVRC)**
- **New River Valley Metropolitan Planning Organization (NRVMPO)**
- **Roanoke Valley Greenway Commission**
- **Virginia Department of Transportation (VDOT)**

Study Work Group

- **Shane Sawyer, VDOT**
- **John Bolecek, VDOT**
- **Michael Gray, VDOT**
- **Carol Linkenhoker, VDOT**
- **Angel Deem, VDOT**
- **Cooper Wamsley, VDOT**
- **Ray Varney, VDOT**
- **David Clarke, VDOT**
- **Kevin Byrd, NRVRC**
- **Dan Brugh, NRVMPO**
- **Amanda McGee, RVARC**
- **Liz Belcher, Roanoke Valley Greenway Commission**
- **Mack Frost, USDOT**
- **Nick Britton, MBI**
- **Brad Shelton, MBI**
- **Jacob Thornton, MBI**

Contact Information

VDOT Project Manager

Shane Sawyer

shane.sawyer@vdot.virginia.gov

(804) 786-0778

VDOT District Contact

Michael Gray

michael.gray@vdot.virginia.gov

(540) 494-8288

Consultant Project Manager

Nick Britton

jnick.britton@mbakerintl.com

(804) 287-3165

VALLEY TO VALLEY TRAIL

PROPOSED TASKS & SCHEDULE

Proposed Tasks

- **Outreach**

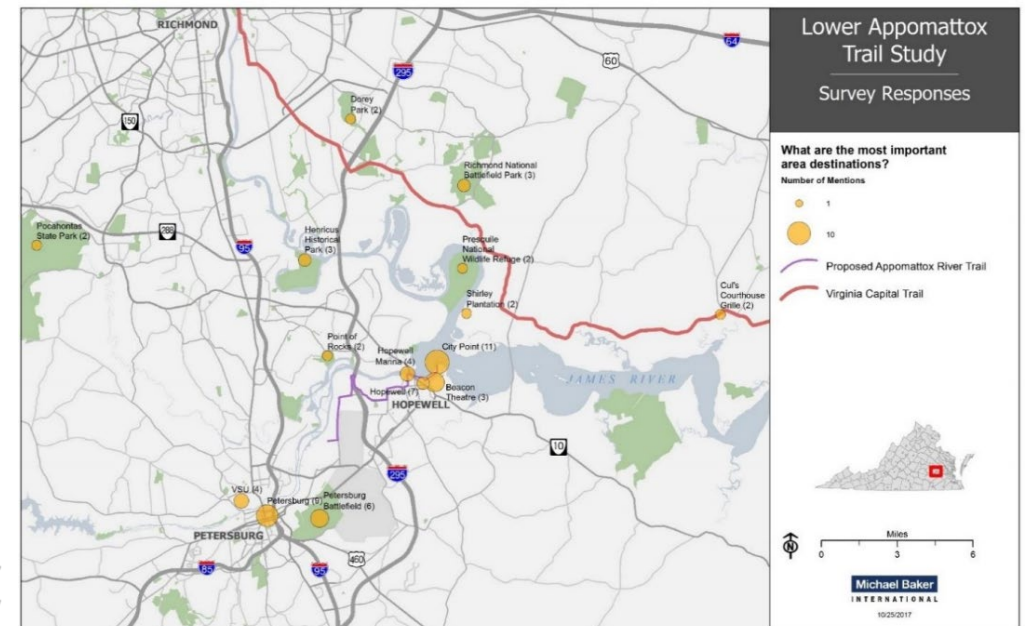
- **Stakeholder coordination (jurisdictions, key agencies, organizations)**

- MBI will develop materials for meetings (webinars, in-person meetings, calls with jurisdictions)
- Coordination with jurisdictions led by RVARC and NRVRC

- **Public outreach**

- What kind of outreach will give us the best results?
- Local and regional stakeholders will take a lead role with our support
- Web survey with public input options

Web Survey Results from Lower Appomattox Trail Study



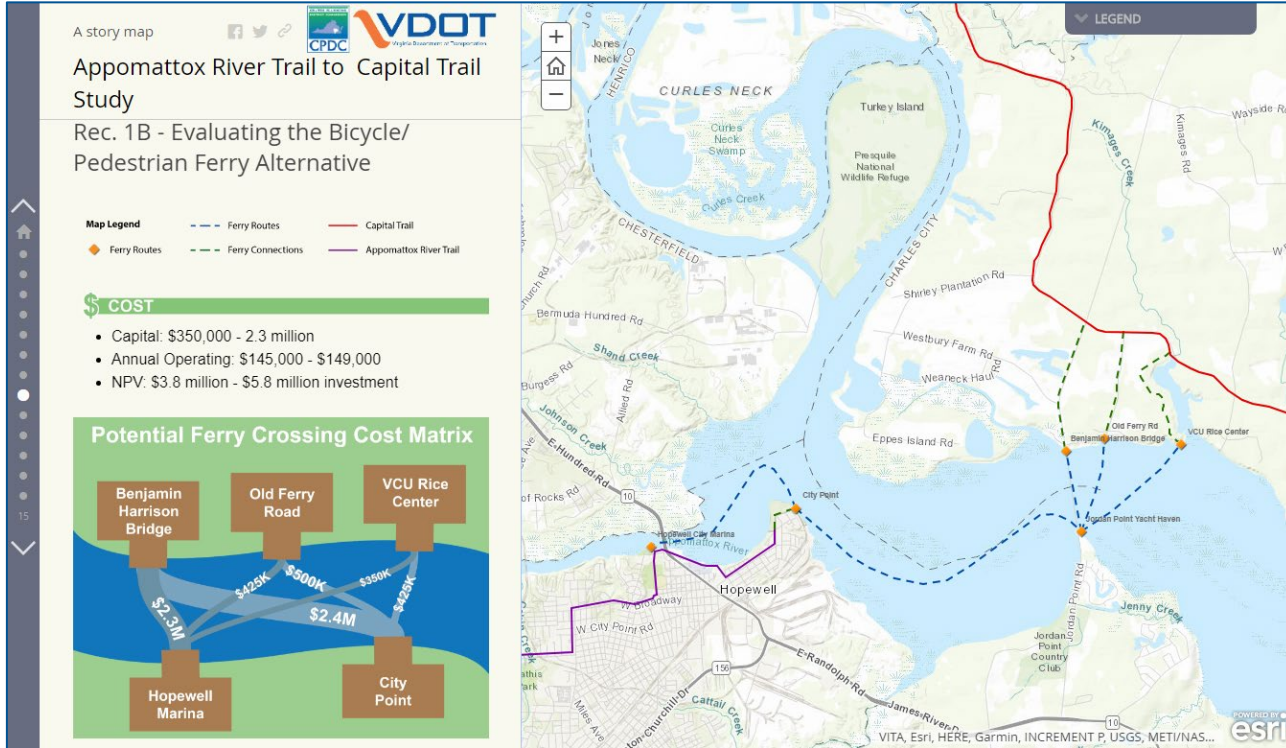
Proposed Tasks

- **Data Collection and Assessment of Existing Conditions**
 - **Data sources:**
 - Federal (e.g., National Wetlands Inventory, National Register of Historic Places)
 - State (e.g., VDOT traffic, right-of-way, crash data, DCR boundaries)
 - Regional and local (e.g., parcels, land use, parks, schools, etc.)
 - Field work (documentation of opportunities and constraints)
 - **Other studies and sources:**
 - Comprehensive plans, bike and pedestrian plans, and any other relevant plans for each jurisdiction along potential alignments
 - Discussions with stakeholders

Proposed Tasks

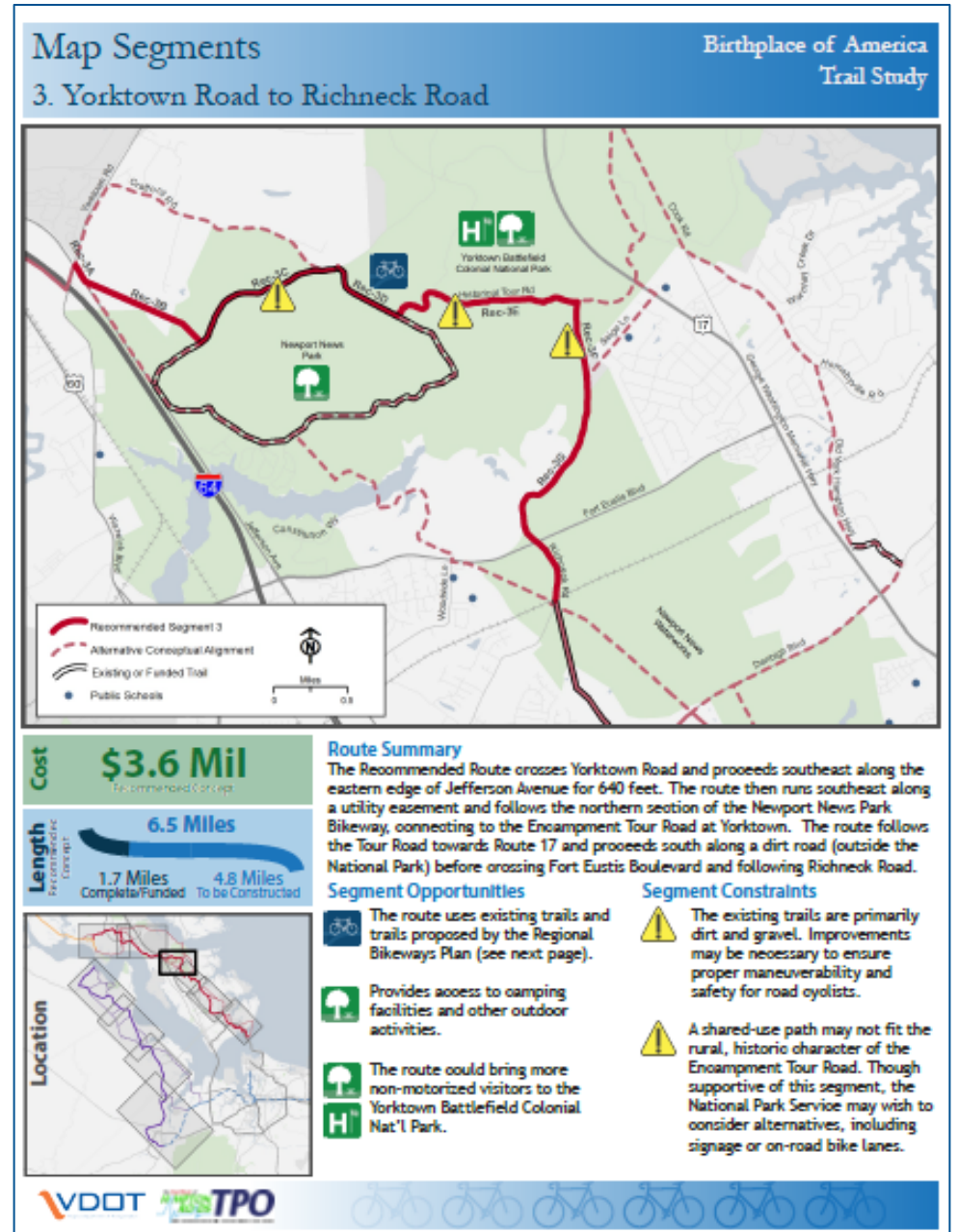
- **Evaluation of Alternatives**
 - Identify potential alternatives and segments of independent utility
 - Use SMART SCALE criteria for scoring and ranking
 - GIS-based selection of highest scoring segments
 - Select Recommended Alternative based on scoring and input
 - Requires stakeholder consensus
- **Reporting**
 - Graphical and informative with emphasis on projects of independent utility

Example Deliverables

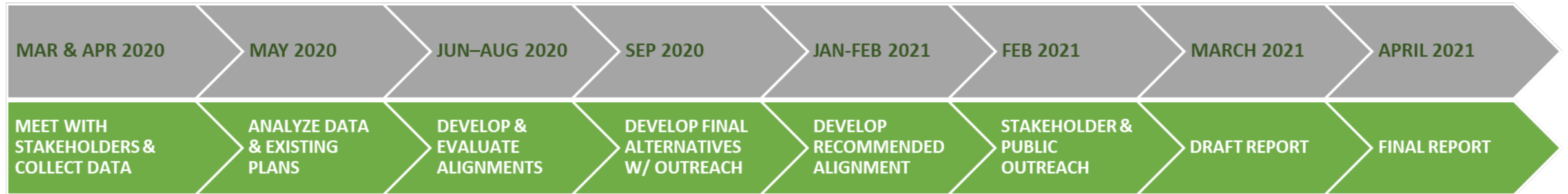


ArcGIS Storyboard of Study Results for Lower Appomattox Trail Study

Summary Sheets of Segments from Birthplace of American Trail Study



Project Schedule



Valley to Valley Trail Study

Project Background

