



TRAFFIC ALERT

VirginiaDOT.org

RELEASE: IMMEDIATE

May 14, 2021

CONTACT: Nina Ullrich 757-409-4376

Nina.Ullrich@VDOT.Virginia.gov

Media Line: 757-956-3032

HamptonRoadsPublicInfo@VDOT.Virginia.gov

PORTION OF ROUTE 619 TO CLOSE IN SOUTHAMPTON COUNTY

Closure to begin as early as May 17 for bridge work

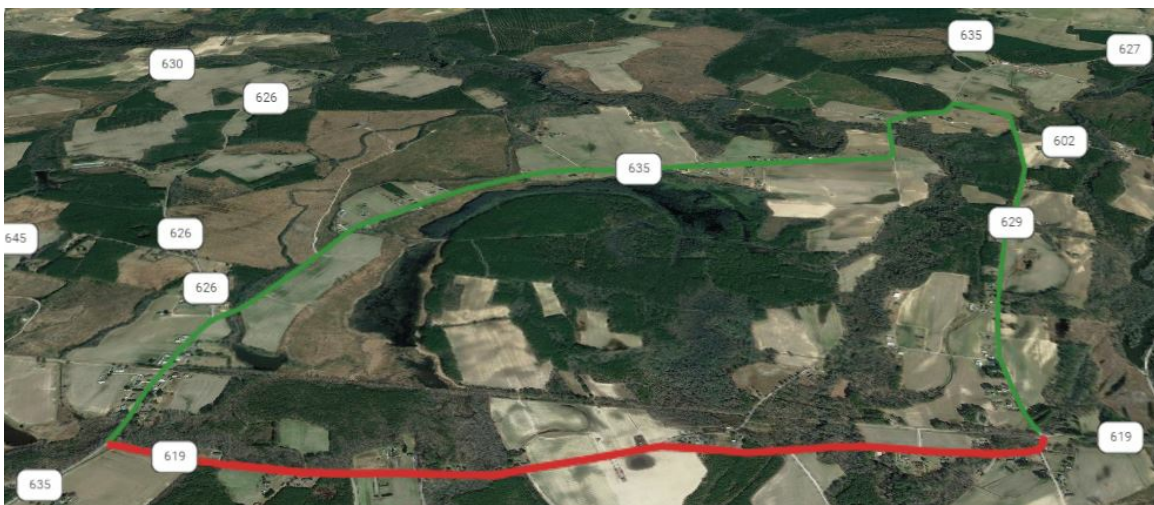
SOUTHAMPTON COUNTY – A Virginia Department of Transportation (VDOT) project to replace the bridge superstructure on Route 619 (Burdette Road) over Cattail Swamp is estimated to start next week. Starting as early as May 17, Route 619 (Burdette Road) will be closed between Route 629 (Line Pine Road) and Route 635 (Black Creek Road) with signed detours in place.

From Route 619 (Burdette Road) and Route 629 (Line Pine Road):

- Turn right on Route 629 (Line Pine Road)
- Turn left on Route 635 (Black Creek Road)
- Continue on Route 635 (Black Creek Road) to Route 619 (Burdette Road)

During this closure, the existing bridge superstructure on Route 619 will be replaced with new steel beams, rail posts, a wooden deck and a guardrail. The bridge replacement project is estimated to be complete in summer 2021.

All construction work is dependent upon weather conditions. Motorists are encouraged to visit www.511virginia.org, call 511, or download Virginia's free 511 mobile app, for current traffic and travel information.



Route 619 (Burdette Road) will be closed between Route 629 (Line Pine Road) and Route 635 (Black Creek Road) starting as early as May 17 with signed detours in place.

(END)

[Click Here to View as Webpage](#)

