



Legend

- XX Mile Marker
- Jurisdictions
- Study Corridor
- Lower Density
- Higher Density

Not To Scale

Henrico County
City of Richmond

- Study Corridor
- Interstate
- Henrico
- Richmond





Legend

- XX Mile Marker
- Jurisdictions
- Study Corridor
- Fatal Crashes
- Lower Density
- Higher Density

Not To Scale

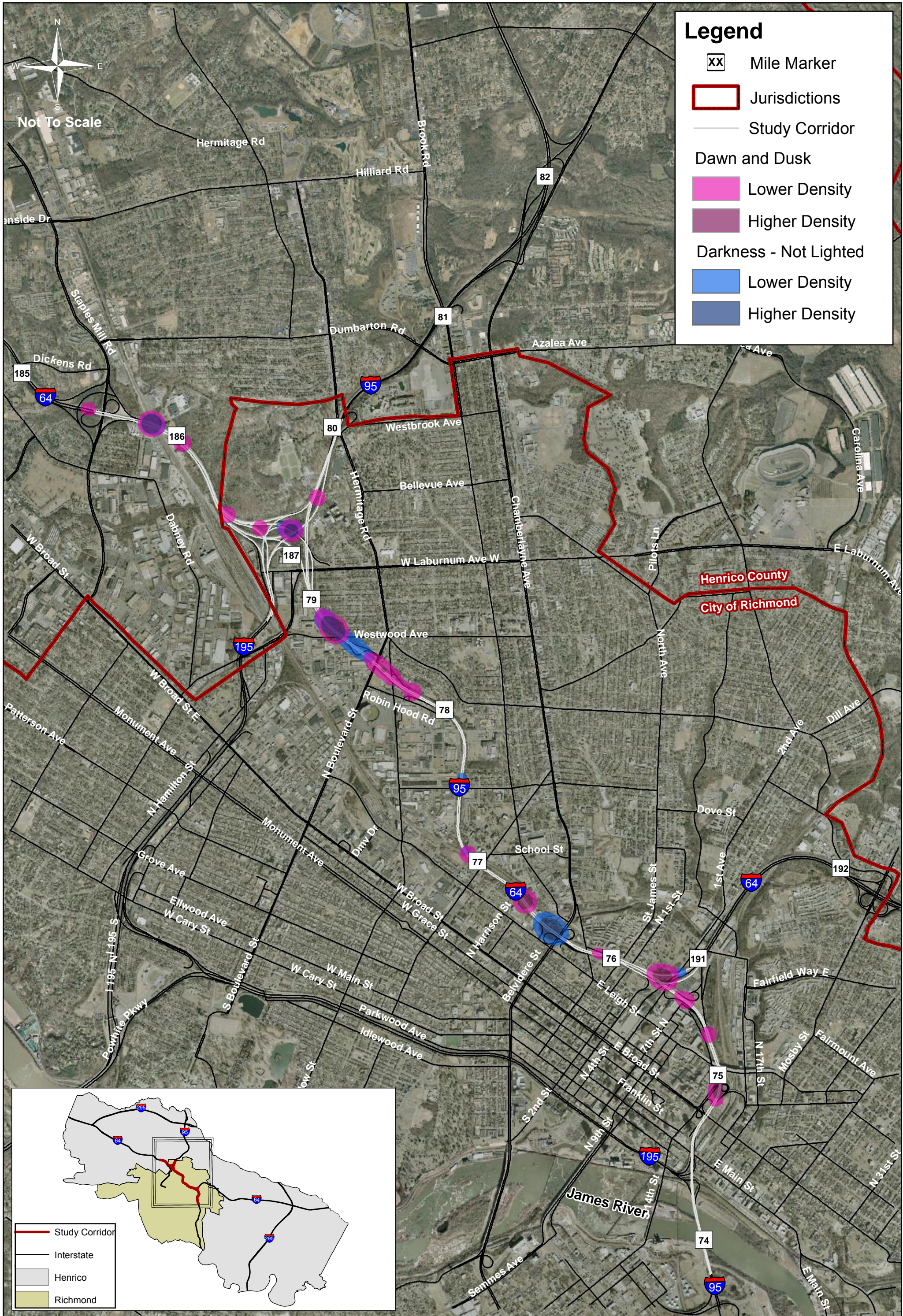
Henrico County
City of Richmond

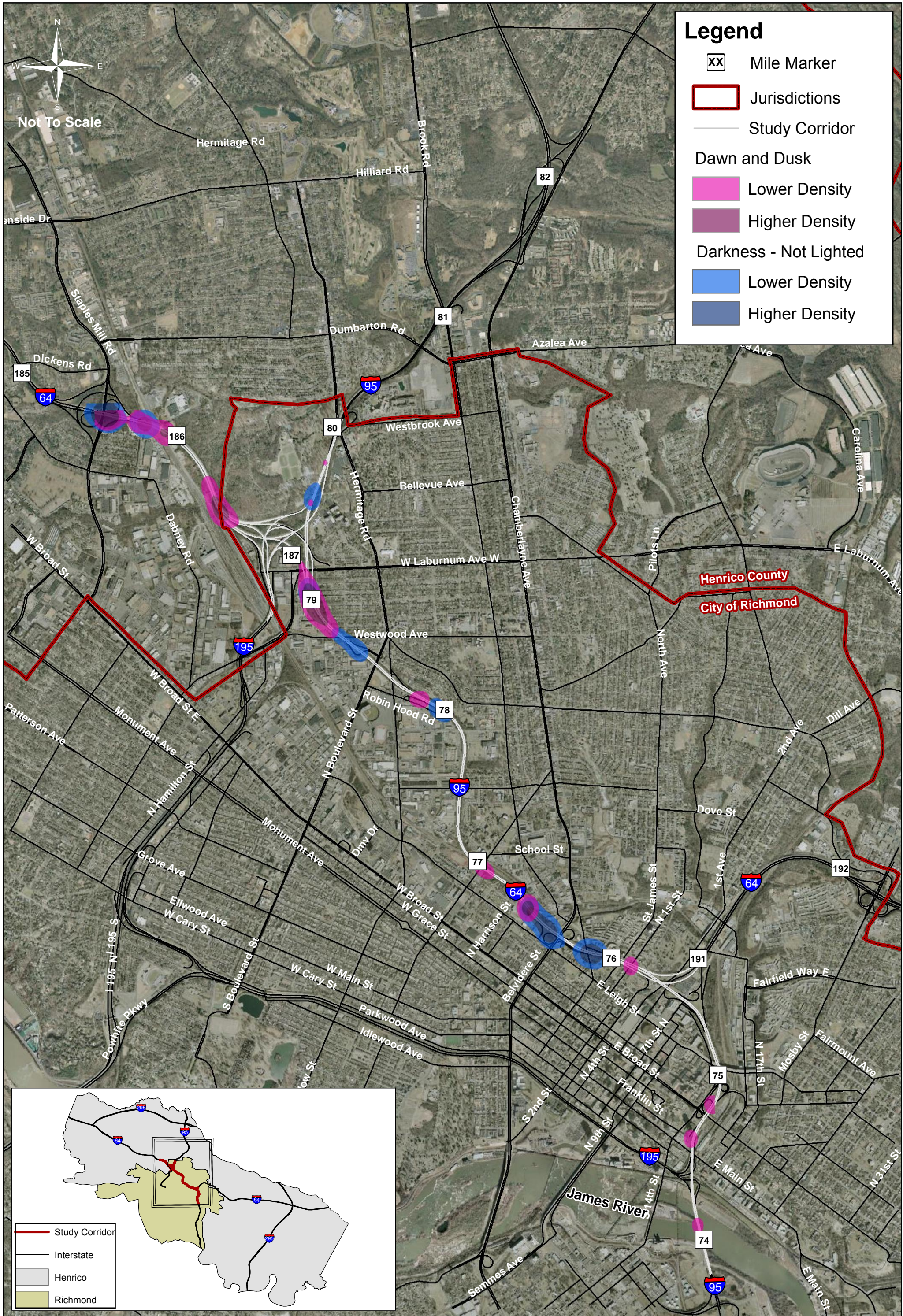
- Study Corridor
- Interstate
- Henrico
- Richmond

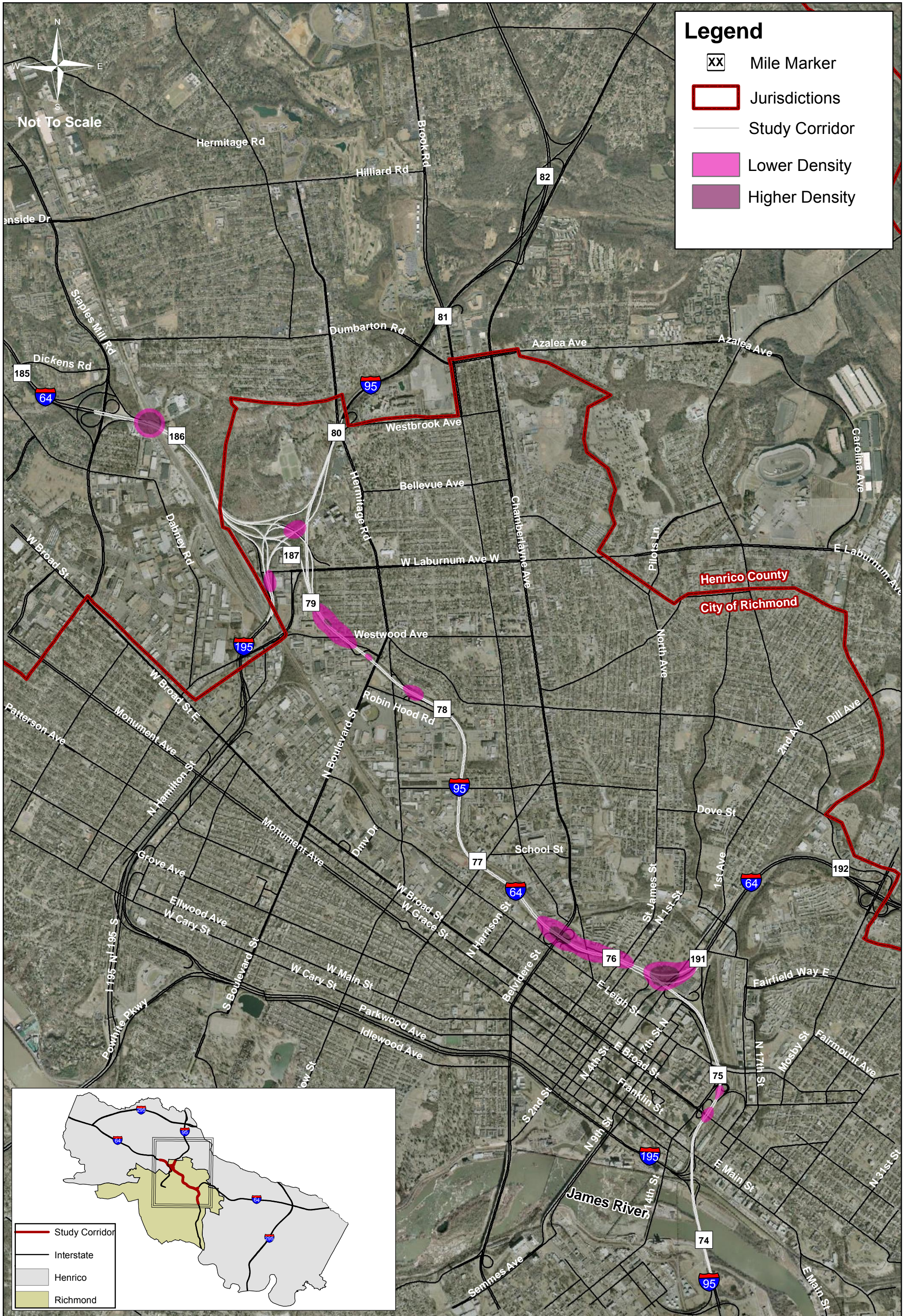


Density of Injury Crashes (2007 - 2009) - I-95 SB / I-64 EB
I-95 / I-64 Overlap Study
City of Richmond and Henrico County, VA

Figure
G4







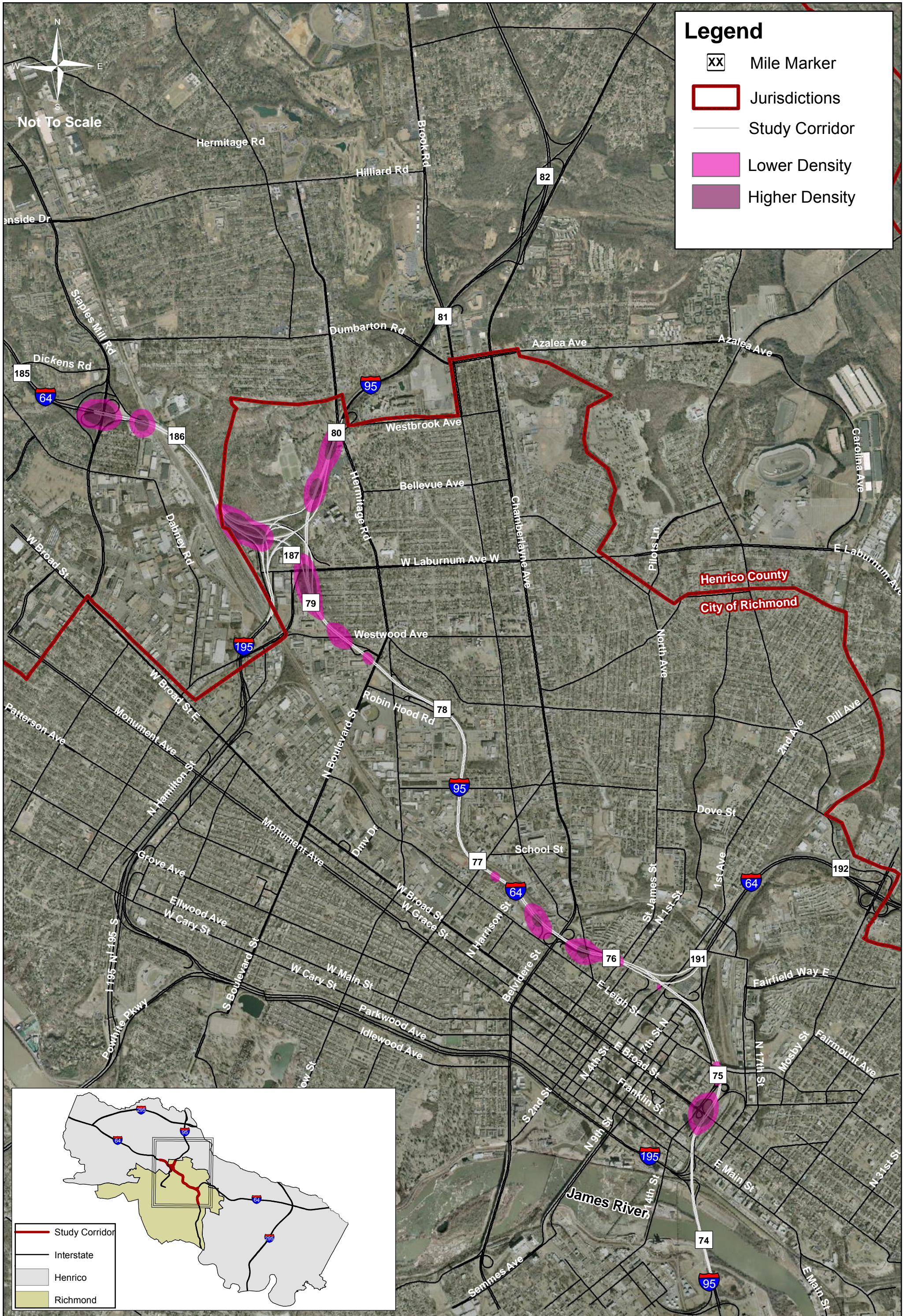
Legend

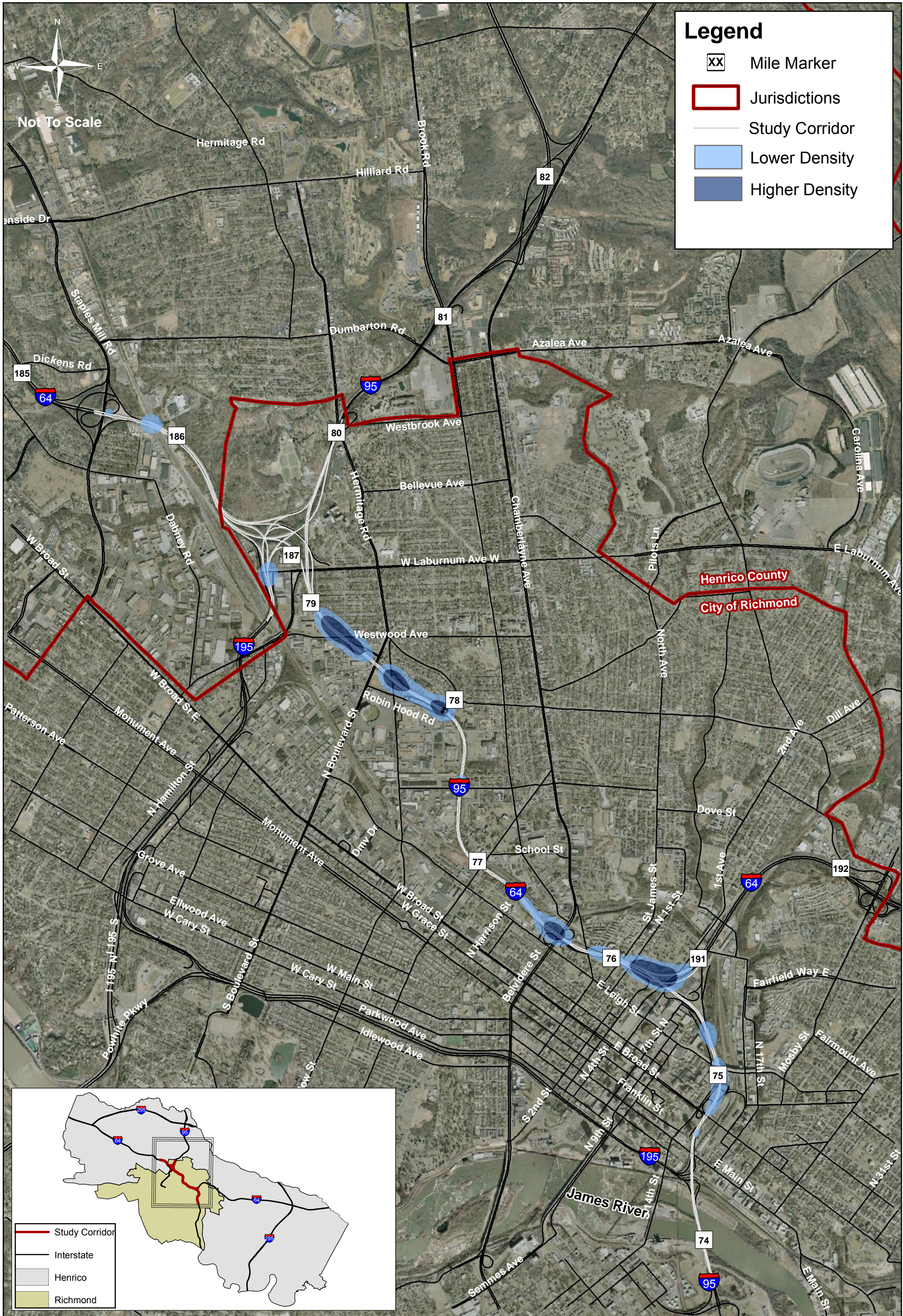
- XX Mile Marker
- Jurisdictions
- Study Corridor
- Lower Density
- Higher Density

Not To Scale

Henrico County
City of Richmond

- Study Corridor
- Interstate
- Henrico
- Richmond

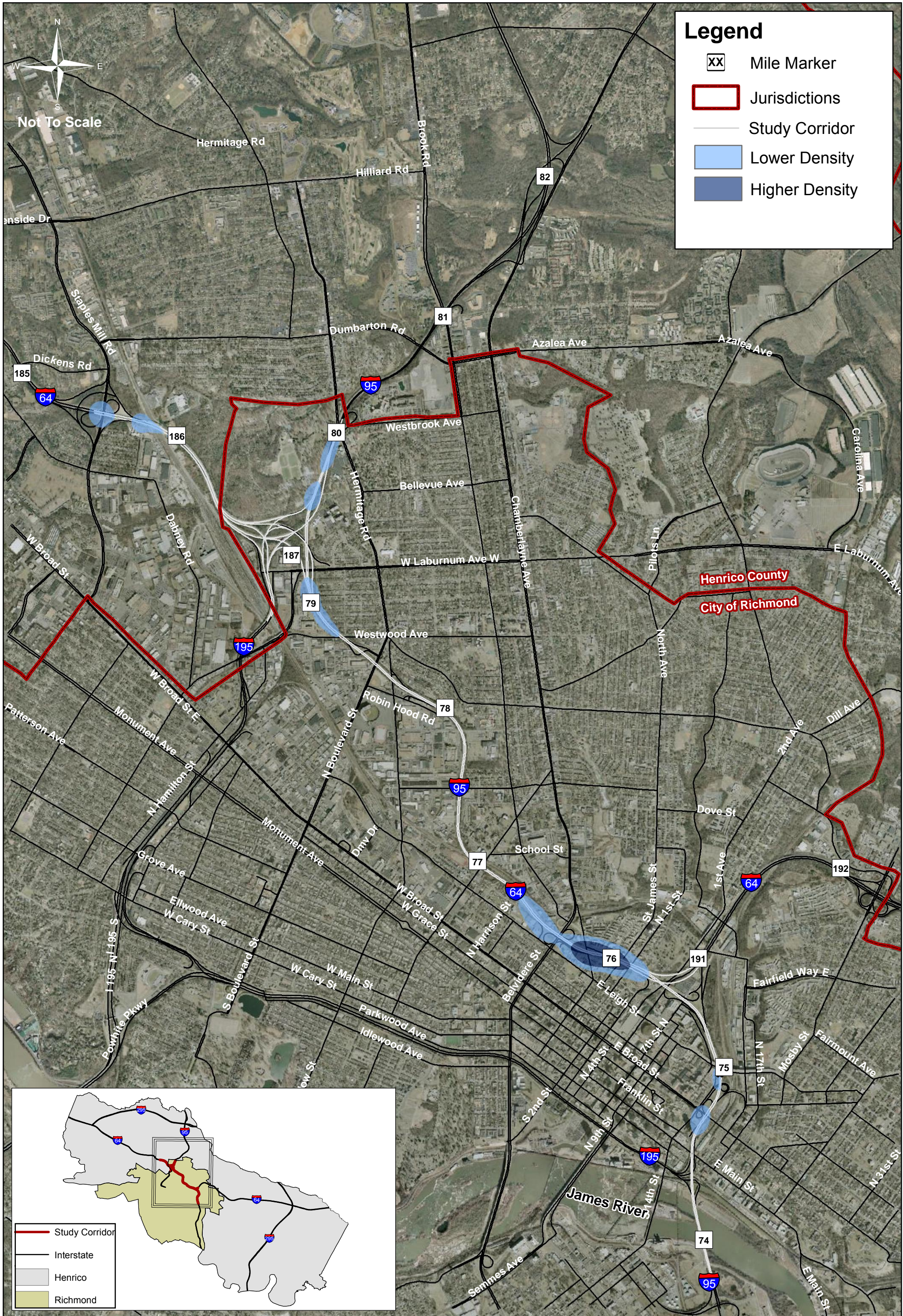




Legend

- XX Mile Marker
- Jurisdictions
- Study Corridor
- Lower Density
- Higher Density

- Study Corridor
- Interstate
- Henrico
- Richmond







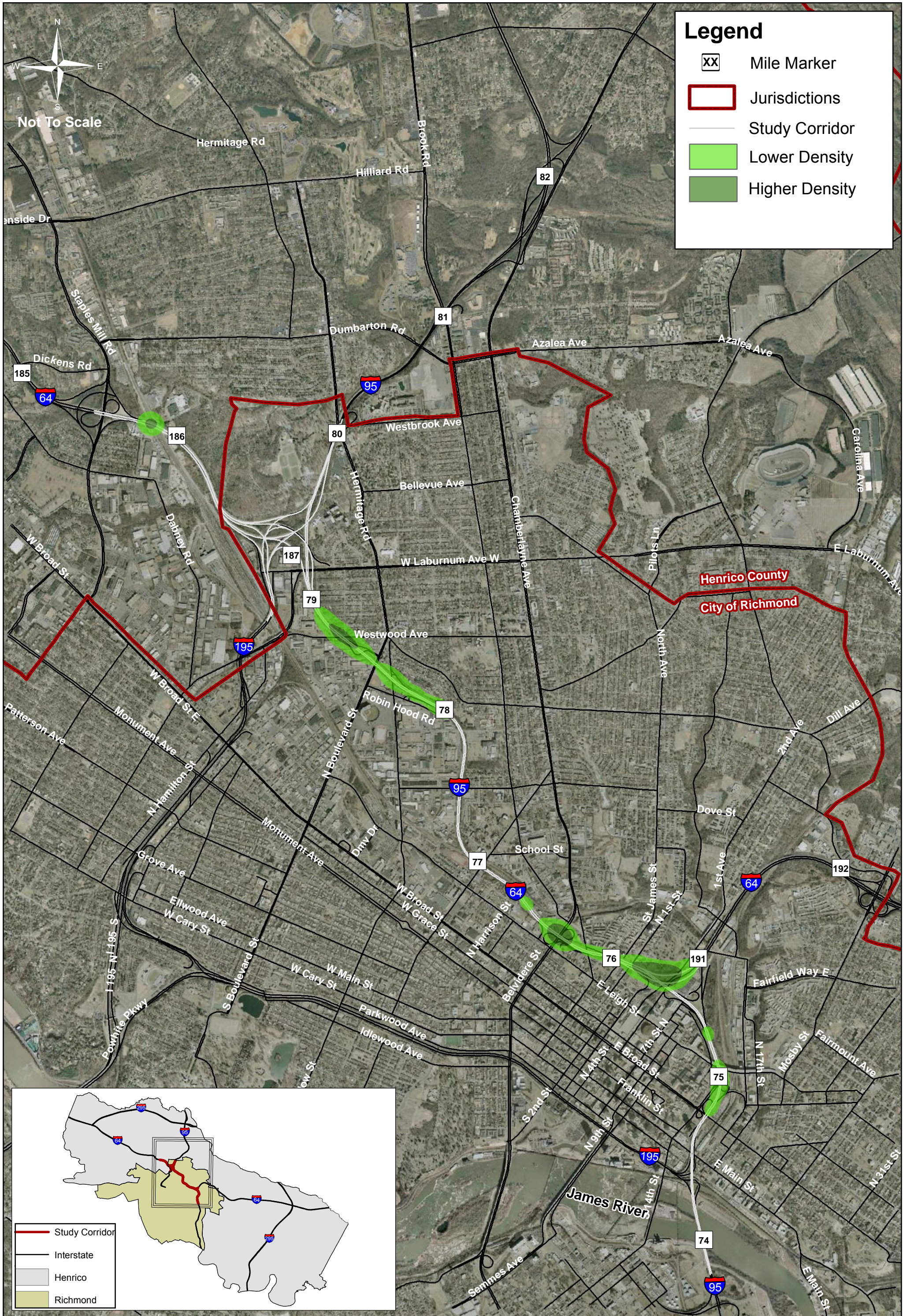
Legend

- XX Mile Marker
- Jurisdictions
- Study Corridor
- Lower Density
- Higher Density

Not To Scale

Henrico County
City of Richmond

- Study Corridor
- Interstate
- Henrico
- Richmond



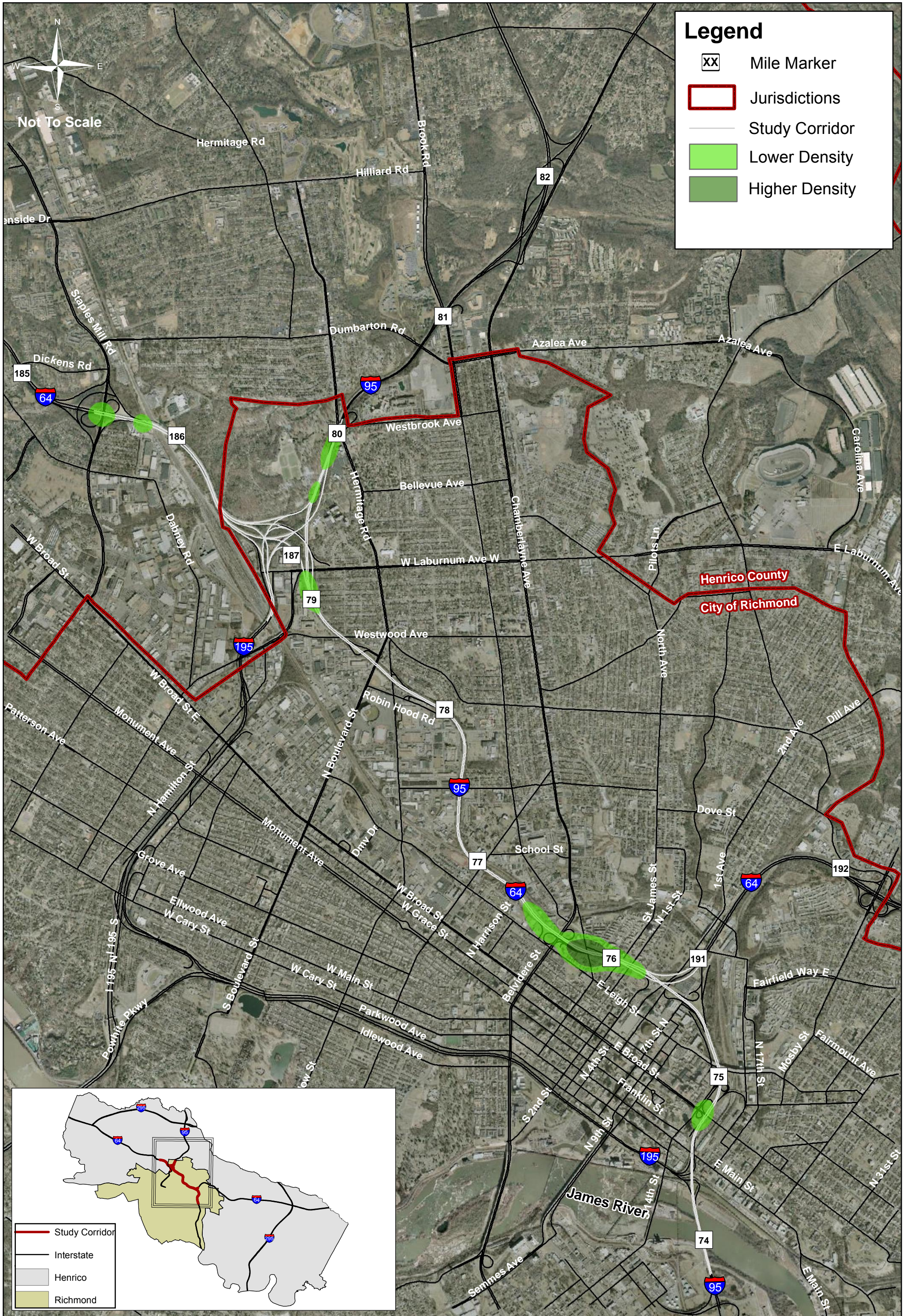
Legend

- XX Mile Marker
- Jurisdictions
- Study Corridor
- Lower Density
- Higher Density

- Study Corridor
- Interstate
- Henrico
- Richmond

Density of Rear End Crashes (2007 - 2009) - I-95 NB / I-64 WB
 I-95 / I-64 Overlap Study
 City of Richmond and Henrico County, VA

Figure
 G13



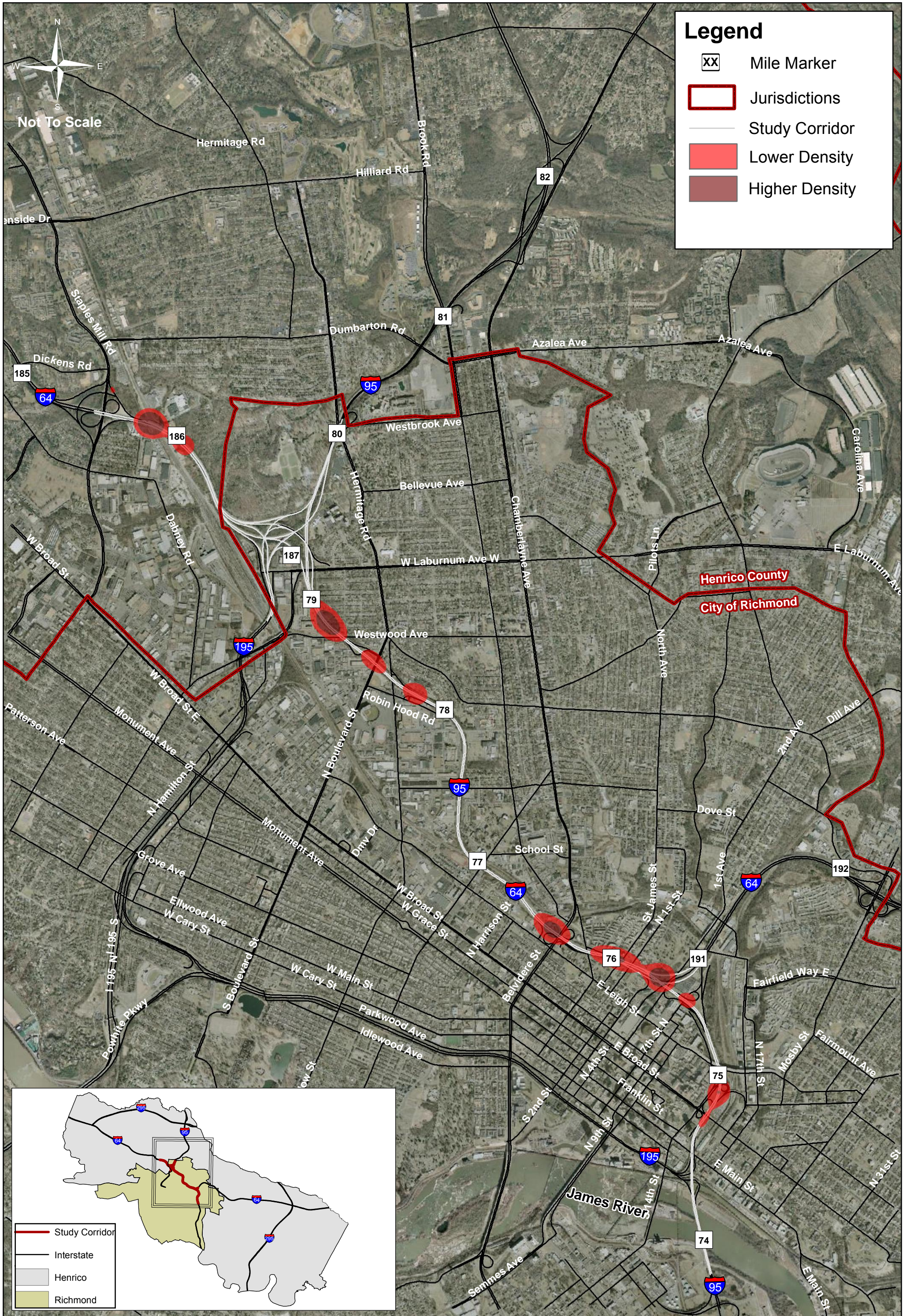
Legend

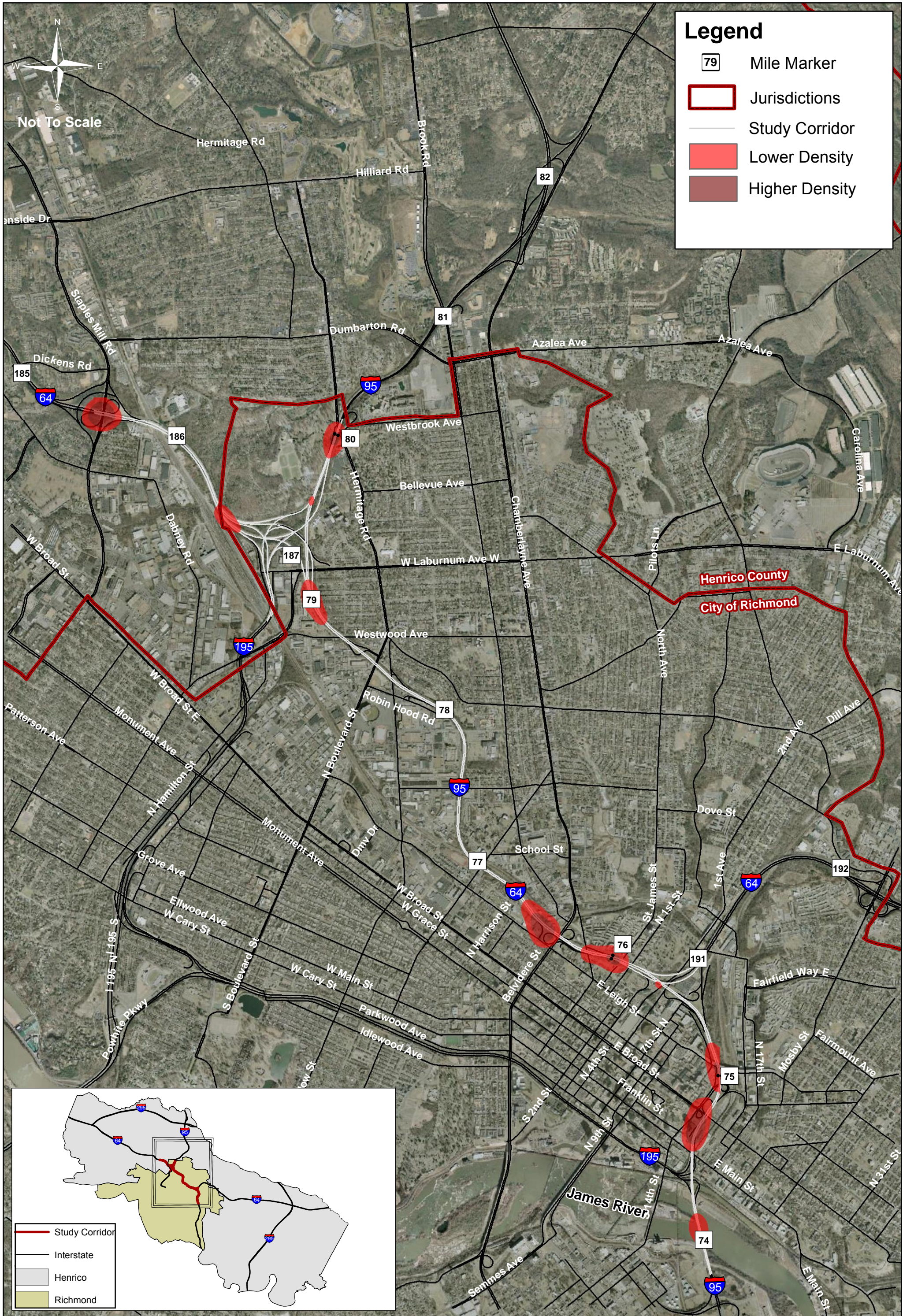
- XX Mile Marker
- Jurisdictions
- Study Corridor
- Lower Density
- Higher Density

Not To Scale

Henrico County
City of Richmond

- Study Corridor
- Interstate
- Henrico
- Richmond





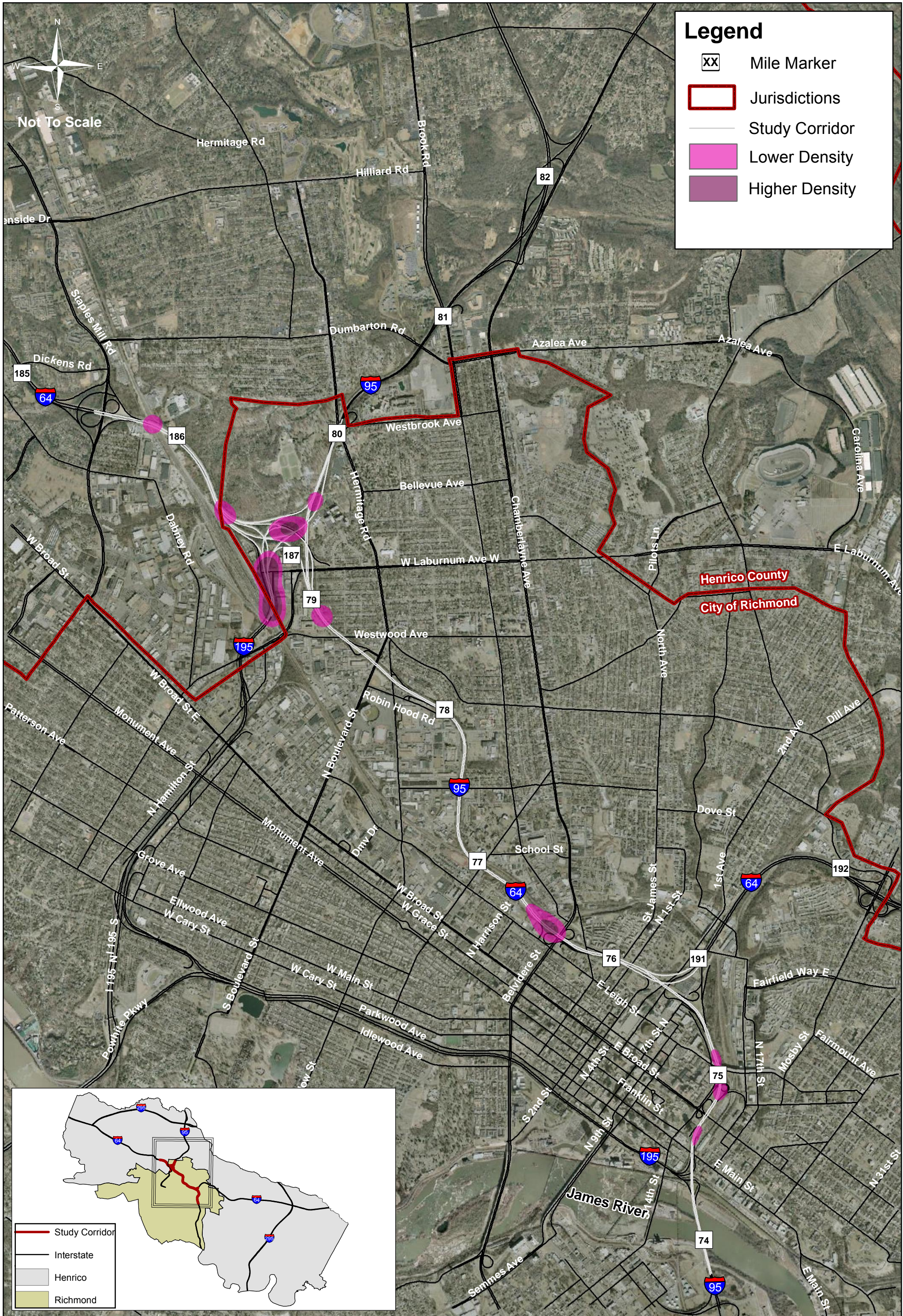
Legend

- 79 Mile Marker
- Jurisdictions
- Study Corridor
- Lower Density
- Higher Density

Not To Scale

Henrico County
City of Richmond

- Study Corridor
- Interstate
- Henrico
- Richmond



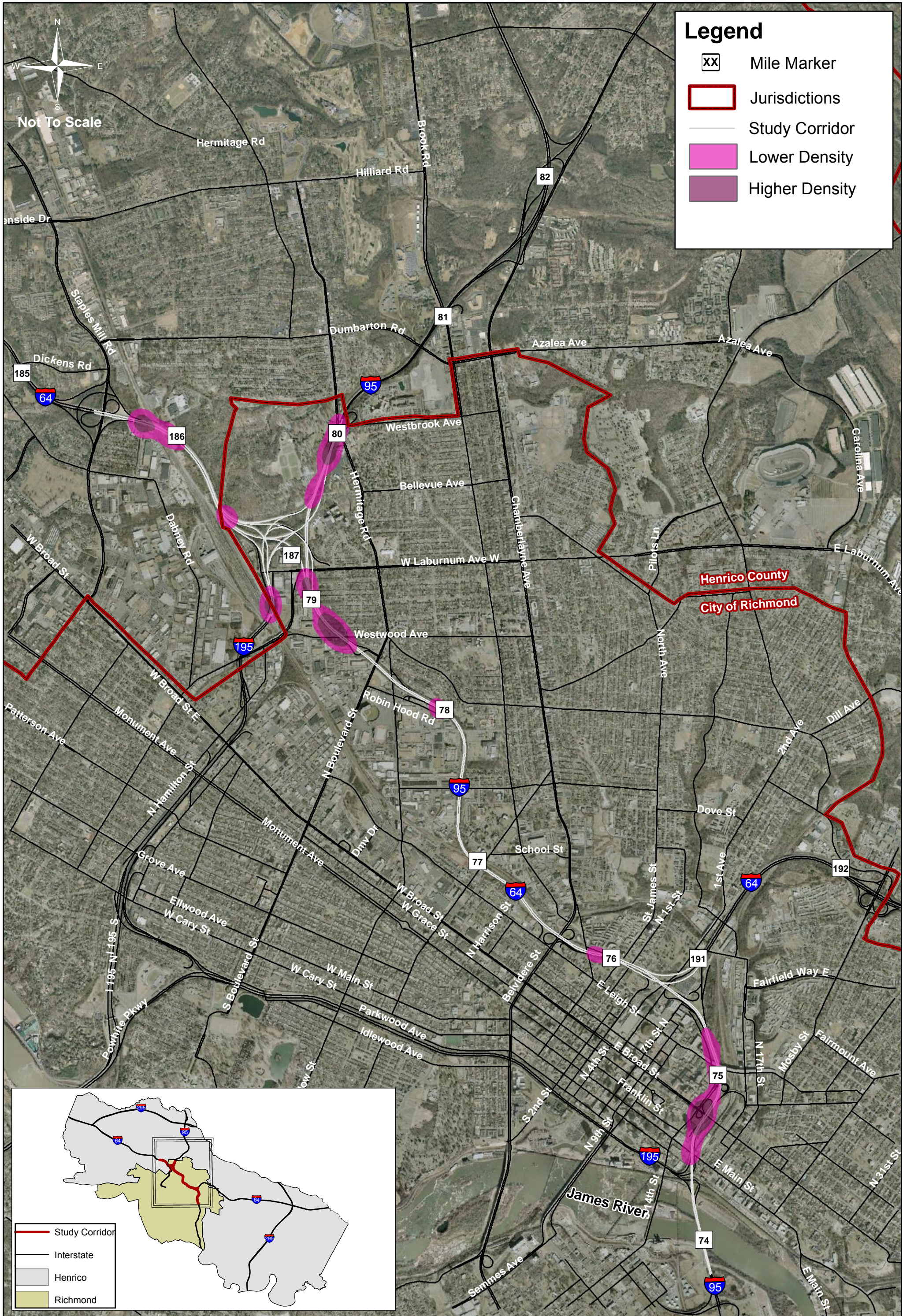
Legend

- XX Mile Marker
- Jurisdictions
- Study Corridor
- Lower Density
- Higher Density

Not To Scale

Henrico County
City of Richmond

- Study Corridor
- Interstate
- Henrico
- Richmond



I-95/I-64 Overlap Study

Crash Summary: Southbound I-195 from Bryan Park (MP 2.50) to South of Laburnum (MP 3.50)

Total Comparison

Corridor	Year	Peak			Light Conditions			Pavement Condition			Type of Collision										Severity			TOTAL	
		AM (6 - 10)	PM (3 - 7)	Off Peak	Day	Dawn / Dusk	Dark	Dry	Wet	Misc	Rear End	Angle	Head On	Sideswipe - Same Direction	Pedestrian	Fixed Object - In Road	Non-Collision	Fixed Object - Off Road	Deer / Other Animal	Other	Backed Into	Fatal	Injury		PDO
I-195 Southbound	2007	0	1	2	2	0	1	2	1	0	0	0	0	1	0	0	0	2	0	0	0	0	0	3	3
	2008	0	0	2	1	0	1	0	2	0	0	0	0	0	0	0	0	2	0	0	0	0	0	2	2
	2009	1	5	9	11	0	4	9	5	1	2	1	0	2	0	0	1	9	0	0	0	0	6	9	15
	TOTAL	1	6	13	14	0	6	11	8	1	2	1	0	3	0	0	1	13	0	0	0	0	6	14	20

Percentage Comparison

Corridor	Year	% Peak Hour			% Light Conditions			% Pavement Condition			% Type of Collision										% Severity			TOTAL
		AM (6 - 10)	PM (3 - 7)	Off Peak	Day	Dawn / Dusk	Dark	Dry	Wet	Misc	Rear End	Angle	Head On	Sideswipe - Same Direction	Pedestrian	Fixed Object - In Road	Non-Collision	Fixed Object - Off Road	Deer / Other Animal	Other	Backed Into	K (1)	A (2)	
I-195 Southbound	2007	0%	33%	67%	67%	0%	33%	67%	33%	0%	0%	0%	33%	0%	0%	0%	67%	0%	0%	0%	0%	0%	100%	100%
	2008	0%	0%	100%	50%	0%	50%	0%	100%	0%	0%	0%	0%	0%	0%	0%	100%	0%	0%	0%	0%	0%	100%	100%
	2009	7%	33%	60%	73%	0%	27%	60%	33%	7%	13%	7%	0%	13%	0%	7%	60%	0%	0%	0%	0%	40%	60%	100%
	TOTAL	5%	30%	65%	70%	0%	30%	55%	40%	5%	10%	5%	0.0%	15%	0.0%	0.0%	5%	65%	0.0%	0.0%	0.0%	0%	30%	70%

I-95/I-64 Overlap Study
Crash Summary: Northbound I-195 from Bryan Park (MP 2.50) to South of Laburnum (MP 3.50)

Total Comparison

Corridor	Year	Peak			Light Conditions			Pavement Condition			Type of Collision										Severity			TOTAL	
		AM (6 - 10)	PM (3 - 7)	Off Peak	Day	Dawn / Dusk	Dark	Dry	Wet	Misc	Rear End	Angle	Head On	Sideswipe - Same Direction	Pedestrian	Fixed Object - In Road	Non-Collision	Fixed Object - Off Road	Deer / Other Animal	Other	Backed Into	Fatal	Injury		PDO
I-195 Northbound	2007	4	9	12	17	0	8	6	16	3	11	0	0	1	0	0	0	13	0	0	0	0	6	19	25
	2008	7	6	17	22	2	6	7	23	0	6	0	0	2	0	0	0	22	0	0	0	0	5	25	30
	2009	11	9	6	19	0	7	7	17	2	5	3	0	1	0	0	0	17	0	0	0	0	3	23	26
	TOTAL	22	24	35	58	2	21	20	56	5	22	3	0	4	0	0	0	52	0	0	0	0	14	67	81

Percentage Comparison

Corridor	Year	% Peak Hour			% Light Conditions			% Pavement Condition			% Type of Collision										% Severity			TOTAL	
		AM (6 - 10)	PM (3 - 7)	Off Peak	Day	Dawn / Dusk	Dark	Dry	Wet	Misc	Rear End	Angle	Head On	Sideswipe - Same Direction	Pedestrian	Fixed Object - In Road	Non-Collision	Fixed Object - Off Road	Deer / Other Animal	Other	Backed Into	K (1)	A (2)		B (3)
I-195 Northbound	2007	16%	36%	48%	68%	0%	32%	24%	64%	12%	44%	0%	0%	4%	0%	0%	0%	52%	0%	0%	0%	0%	24%	76%	100%
	2008	23%	20%	57%	73%	7%	20%	23%	77%	0%	20%	0%	0%	7%	0%	0%	0%	73%	0%	0%	0%	0%	17%	83%	100%
	2009	42%	35%	23%	73%	0%	27%	27%	65%	8%	19%	12%	0%	4%	0%	0%	0%	65%	0%	0%	0%	0%	12%	88%	100%
	TOTAL	27%	30%	44%	72%	2%	26%	25%	69%	6%	27%	4%	0%	5%	0%	0%	0%	64%	0%	0%	0%	0%	17%	83%	

I-95/I-64 Overlap Study
Crash Summary: Westbound I-64 from Staples Mill (MP 185.50) to Bryan Park (MP 187.50)

Total Comparison

Corridor	Year	Peak			Light Conditions			Pavement Condition			Type of Collision										Severity			TOTAL	
		AM (6 - 10)	PM (3 - 7)	Off Peak	Day	Dawn / Dusk	Dark	Dry	Wet	Misc	Rear End	Angle	Head On	Sideswipe - Same Direction	Sideswipe - Opposite Direction	Fixed Object - In Road	Non-Collision	Fixed Object - Off Road	Deer / Other Animal	Other	Backed Into	Fatal	Injury		PDO
I-64 Westbound	2007	19	16	22	41	6	10	46	10	1	31	0	0	14	0	0	12	0	0	0	0	0	18	39	57
	2008	20	12	19	37	4	10	43	5	3	20	1	0	16	0	0	13	0	0	0	0	0	16	35	51
	2009	12	18	23	35	4	14	32	15	6	25	4	0	9	0	0	14	0	1	0	0	0	22	31	53
	TOTAL	51	46	64	113	14	34	121	30	10	76	5	0	39	0	0	39	0	1	0	0	0	56	105	161

Percentage Comparison

Corridor	Year	% Peak Hour			% Light Conditions			% Pavement Condition			% Type of Collision										% Severity			TOTAL	
		AM (6 - 10)	PM (3 - 7)	Off Peak	Day	Dawn / Dusk	Dark	Dry	Wet	Misc	Rear End	Angle	Head On	Sideswipe - Same Direction	Sideswipe - Opposite Direction	Fixed Object - In Road	Non-Collision	Fixed Object - Off Road	Deer / Other Animal	Other	Backed Into	K (1)	A (2)		B (3)
I-64 Westbound	2007	33%	28%	39%	72%	11%	18%	81%	18%	2%	54%	0%	0%	25%	0%	0%	21%	0%	0%	0%	0%	0%	32%	68%	100%
	2008	39%	24%	37%	73%	8%	20%	84%	10%	6%	39%	2%	0%	31%	0%	0%	25%	0%	0%	0%	0%	0%	31%	69%	100%
	2009	23%	34%	43%	66%	8%	26%	60%	28%	11%	47%	8%	0%	17%	0%	0%	26%	0%	2%	0%	0%	0%	42%	58%	100%
	TOTAL	32%	29%	40%	70%	9%	21%	75%	19%	6%	47%	3%	0%	24%	0%	0%	24%	0%	1%	0%	1%	0%	35%	65%	

I-95/I-64 Overlap Study
Crash Summary: Eastbound I-64 from Staples Mill (MP 185.50) to Bryan Park (MP 187.50)

Total Comparison

Corridor	Year	Peak			Light Conditions			Pavement Condition			Type of Collision										Severity			TOTAL	
		AM (6 - 10)	PM (3 - 7)	Off Peak	Day	Dawn / Dusk	Dark	Dry	Wet	Misc	Rear End	Angle	Head On	Sideswipe - Same Direction	Sideswipe - Opposite Direction	Fixed Object - In Road	Non-Collision	Fixed Object - Off Road	Deer / Other Animal	Other	Backed Into	Fatal	Injury		PDO
I-64 Eastbound	2007	26	41	19	55	11	20	66	14	6	53	0	0	12	0	0	2	18	0	1	0	0	19	67	86
	2008	24	20	13	36	4	17	41	16	0	36	2	0	8	0	0	11	0	0	0	0	11	46	57	
	2009	19	10	15	33	4	7	33	7	4	28	4	0	4	0	0	1	7	0	0	0	0	16	28	44
	TOTAL	69	71	47	124	19	44	140	37	10	117	6	0	24	0	0	3	36	0	1	0	0	46	141	187

Percentage Comparison

Corridor	Year	% Peak Hour			% Light Conditions			% Pavement Condition			% Type of Collision										% Severity			TOTAL	
		AM (6 - 10)	PM (3 - 7)	Off Peak	Day	Dawn / Dusk	Dark	Dry	Wet	Misc	Rear End	Angle	Head On	Sideswipe - Same Direction	Sideswipe - Opposite Direction	Fixed Object - In Road	Non-Collision	Fixed Object - Off Road	Deer / Other Animal	Other	Backed Into	K (1)	A (2)		B (3)
I-64 Eastbound	2007	30%	48%	22%	64%	13%	23%	77%	16%	7%	62%	0%	0%	14%	0%	0%	2%	21%	0%	1%	0%	0%	22%	78%	100%
	2008	42%	35%	23%	63%	7%	30%	72%	28%	0%	63%	4%	0%	14%	0%	0%	19%	0%	0%	0%	0%	19%	81%	100%	
	2009	43%	23%	34%	75%	9%	16%	75%	16%	9%	64%	9%	0%	9%	0%	2%	16%	0%	0%	0%	0%	0%	36%	64%	100%
	TOTAL	37%	38%	25%	66%	10%	24%	75%	20%	5%	63%	3%	0%	13%	0%	0%	2%	19%	0%	1%	0%	0%	25%	75%	

I-95/I-64 Overlap Study
Crash Summary: Southbound I-95 from James River Bridge (MP 73.25) to Hermitage Road (MP 80.25)

Total Comparison

Corridor	Year	Peak			Light Conditions			Pavement Condition			Type of Collision										Severity			TOTAL	
		AM (6 - 10)	PM (3 - 7)	Off Peak	Day	Dawn / Dusk	Dark	Dry	Wet	Misc	Rear End	Angle	Head On	Sideswipe - Same Direction	Pedestrian	Fixed Object - In Road	Non-Collision	Fixed Object - Off Road	Deer / Other Animal	Other	Backed Into	Fatal	Injury		PDO
I-95 Southbound	2007	50	96	86	165	14	53	200	29	3	139	0	0	35	0	0	4	53	0	1	0	0	66	166	232
	2008	56	93	79	165	10	53	189	38	1	135	13	1	25	0	0	4	49	0	0	1	0	61	167	228
	2009	45	97	86	155	17	56	172	44	12	143	18	2	23	1	2	4	32	1	1	0	1	58	169	228
	TOTAL	151	286	251	485	41	162	561	111	16	417	31	3	83	1	2	12	134	1	2	1	1	185	502	688

Percentage Comparison

Corridor	Year	% Peak Hour			% Light Conditions			% Pavement Condition			% Type of Collision										% Severity			TOTAL	
		AM (6 - 10)	PM (3 - 7)	Off Peak	Day	Dawn / Dusk	Dark	Dry	Wet	Misc	Rear End	Angle	Head On	Sideswipe - Same Direction	Pedestrian	Fixed Object - In Road	Non-Collision	Fixed Object - Off Road	Deer / Other Animal	Other	Backed Into	K (1)	A (2)		B (3)
I-95 Southbound	2007	22%	41%	37%	71%	6%	23%	86%	13%	1%	60%	0%	0%	15%	0%	0%	2%	23%	0%	1%	0%	0%	28%	72%	100%
	2008	25%	41%	35%	72%	4%	23%	83%	17%	0%	59%	6%	0.4%	11%	0%	0%	2%	21%	0%	0%	1%	0%	27%	73%	100%
	2009	20%	43%	38%	68%	7%	25%	75%	19%	5%	63%	8%	1%	10%	1%	1%	2%	14%	1%	1%	0%	0%	25%	74%	100%
	TOTAL	22%	42%	37%	70%	6%	24%	82%	16%	2%	61%	5%	0.4%	12%	0.1%	0.3%	2%	20%	0.1%	0.3%	0.1%	0%	27%	73%	100%

I-95/I-64 Overlap Study

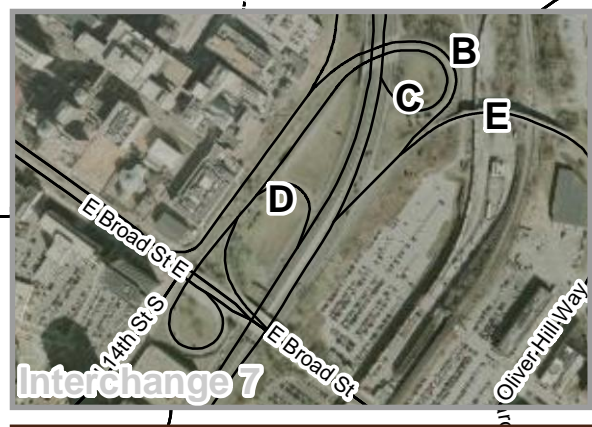
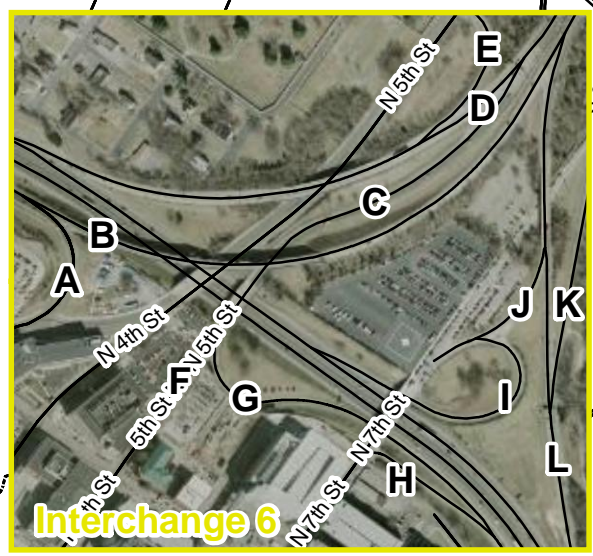
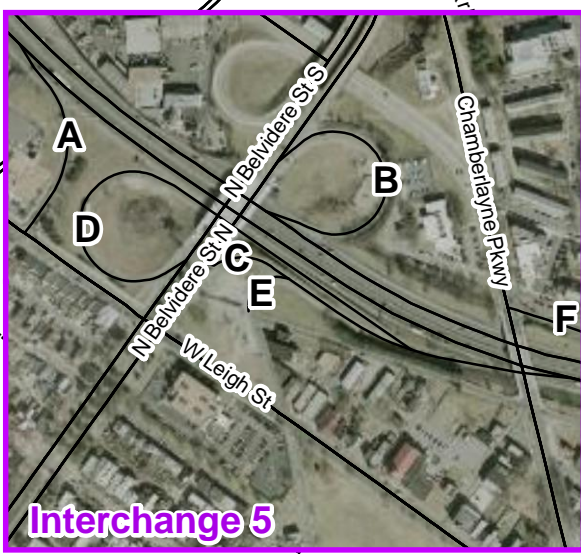
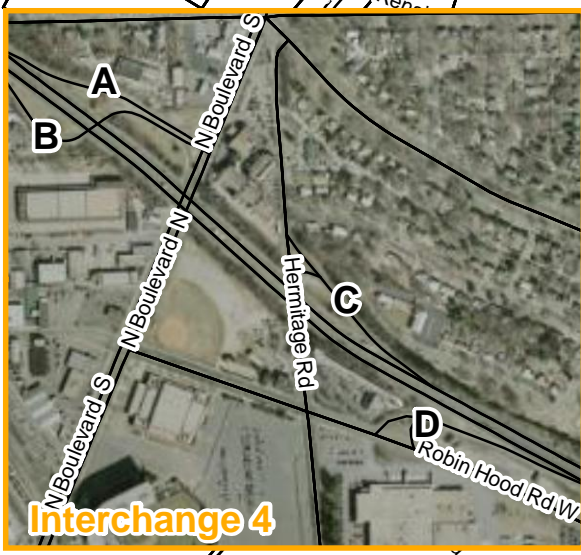
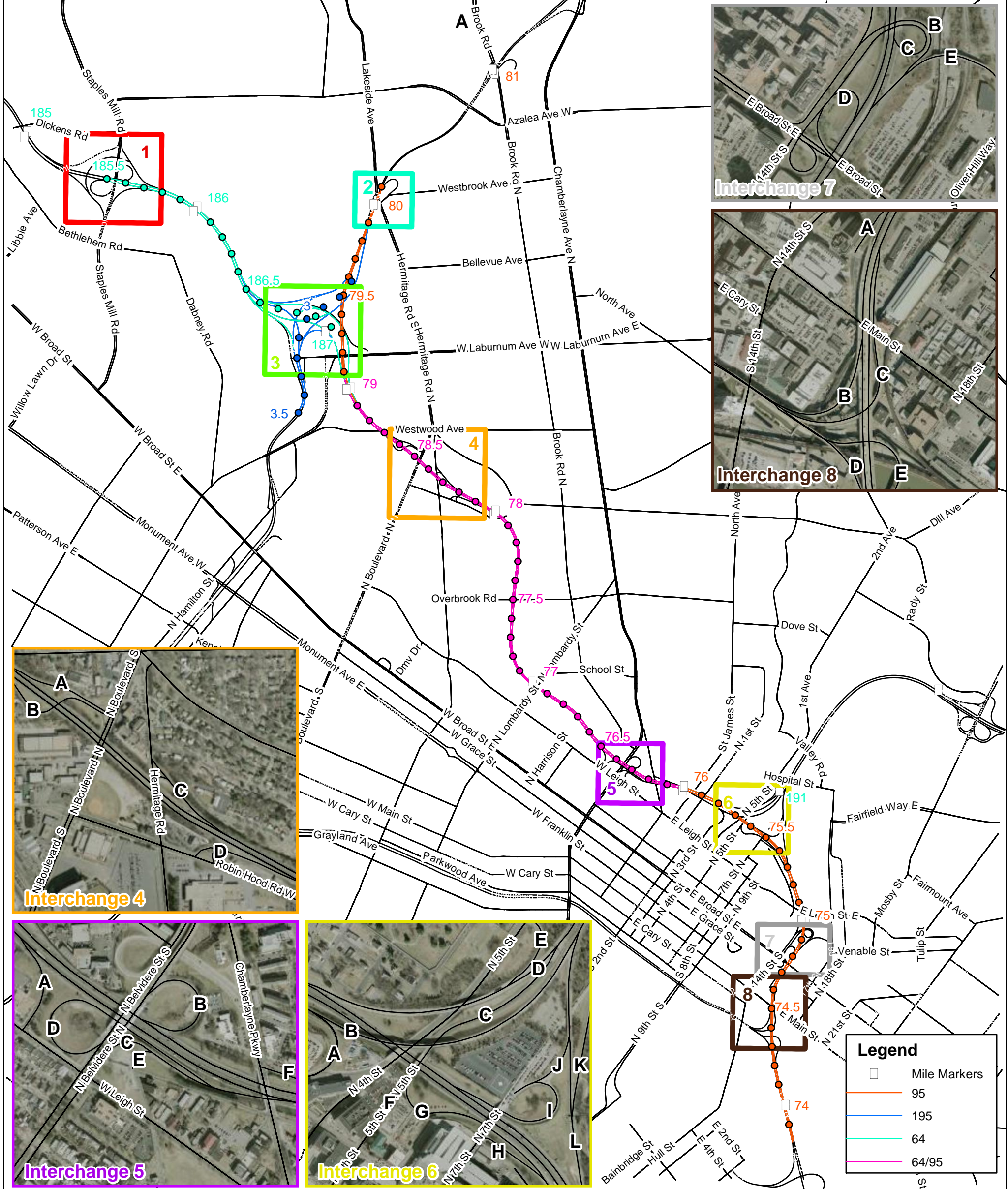
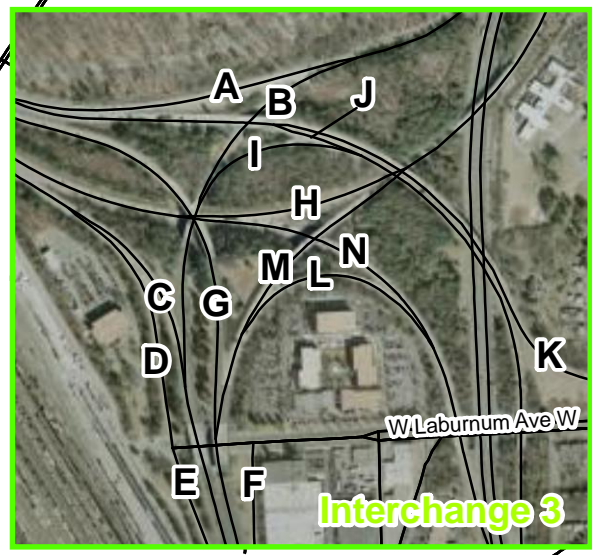
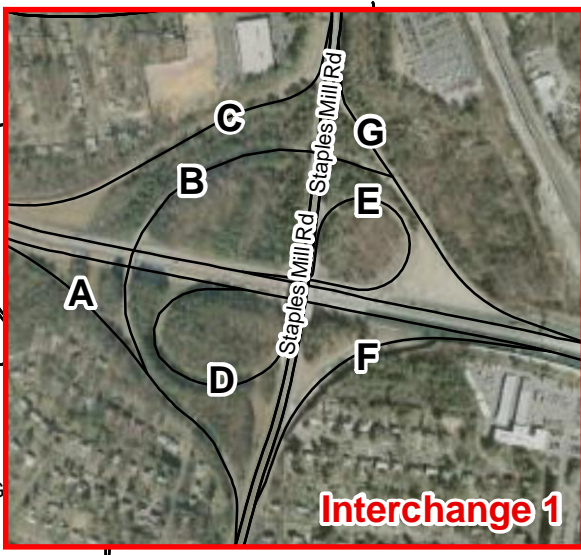
Crash Summary: Northbound I-95 from James River Bridge (MP 73.25) to Hermitage Road (MP 80.25)

Total Comparison

Corridor	Year	Peak			Light Conditions			Pavement Condition			Type of Collision										Severity			TOTAL	
		AM (6 - 10)	PM (3 - 7)	Off Peak	Day	Dawn / Dusk	Dark	Dry	Wet	Misc	Rear End	Angle	Head On	Sideswipe - Same Direction	Sideswipe - Opposite Direction	Pedestrian	Fixed Object - In Road	Non-Collision	Fixed Object - Off Road	Deer / Other Animal	Other	Backed Into	Fatal		Injury
I-95 Northbound	2007	55	92	84	163	13	55	36	193	2	115	4	0	66	0	0	0	44	0	1	1	2	65	164	231
	2008	62	102	82	177	9	60	44	202	0	156	15	1	31	0	1	1	36	0	0	1	0	68	178	246
	2009	47	88	64	145	8	46	38	150	11	116	13	0	27	1	0	1	38	0	1	0	0	56	143	199
	TOTAL	164	282	230	485	30	161	118	545	13	387	32	1	124	1	1	2	6	118	0	2	2	2	189	485

Percentage Comparison

Corridor	Year	% Peak Hour			% Light Conditions			% Pavement Condition			% Type of Collision										% Severity			TOTAL	
		AM (6 - 10)	PM (3 - 7)	Off Peak	Day	Dawn / Dusk	Dark	Dry	Wet	Misc	Rear End	Angle	Head On	Sideswipe - Same Direction	Sideswipe - Opposite Direction	Pedestrian	Fixed Object - In Road	Non-Collision	Fixed Object - Off Road	Deer / Other Animal	Other	Backed Into	K (1)		A (2)
I-95 Northbound	2007	24%	40%	36%	71%	6%	24%	16%	84%	1%	50%	2%	0%	29%	0%	0%	0%	19%	0%	1%	0%	1%	28%	71%	100%
	2008	25%	41%	33%	72%	4%	24%	18%	82%	0%	63%	6%	0.4%	13%	0%	0%	2%	15%	0%	0%	1%	0%	28%	72%	100%
	2009	24%	44%	32%	73%	4%	23%	19%	75%	6%	58%	7%	0%	14%	1%	0%	1%	19%	0%	1%	0%	0%	28%	72%	100%
	TOTAL	24%	42%	35%	72%	4%	24%	17%	81%	2%	57%	5%	0.1%	18%	0.1%	0.1%	0.3%	1%	17%	0%	0.3%	0.3%	0%	28%	72%



2010 Dollars	
Crash Type	Weight
Fatal	558
Injury	16
PDO	1

I-95/I-64 Overlap Study
Summary of Ramp Crashes - Equivalent Property Damage Only (EPDO)

Source: Crash cost assumptions obtained from VDOT 2010 Highway Safety Improvement Program (HSIP)

Ramp	Severity	Angle	FOOR	Non-Collision	Rear End	SS - Same Dir	Other	Number Crashes	Total EPDO Score
1-A	Fatal	0	0	0	0	0	0	0	38
	Injury	0	1	0	1	0	0	2	
	PDO	1	0	0	3	2	0	6	
1-B	Fatal	0	0	0	0	0	0	0	2
	Injury	0	0	0	0	0	0	0	
	PDO	0	1	0	0	1	0	2	
1-C	Fatal	0	0	0	0	0	0	0	18
	Injury	0	1	0	2	0	0	1	
	PDO	0	0	0	2	0	0	2	
1-D	Fatal	0	0	0	0	0	0	0	3
	Injury	0	0	0	0	0	0	0	
	PDO	0	2	1	0	0	0	3	
1-E	Fatal	0	0	0	0	0	0	0	0
	Injury	0	0	0	0	0	0	0	
	PDO	0	0	0	0	0	0	0	
1-F	Fatal	0	0	0	0	0	0	0	18
	Injury	0	1	0	0	0	0	1	
	PDO	0	0	0	1	1	0	2	
1-G	Fatal	0	0	0	0	0	0	0	61
	Injury	0	0	0	1	2	0	3	
	PDO	1	3	0	4	5	0	13	
2-A	Fatal	0	0	0	0	0	0	0	34
	Injury	0	1	1	0	0	0	2	
	PDO	0	1	0	0	0	1	2	
2-B	Fatal	0	0	0	0	0	0	0	50
	Injury	0	0	0	3	0	0	3	
	PDO	0	0	0	1	1	0	2	
3-A	Fatal	0	0	0	0	0	0	0	1
	Injury	0	0	0	0	0	0	0	
	PDO	0	0	0	0	1	0	1	
3-B	Fatal	0	0	0	0	0	0	0	57
	Injury	0	1	1	0	1	0	3	
	PDO	2	3	0	2	2	0	9	
3-C	Fatal	0	0	0	0	0	0	0	3
	Injury	0	0	0	0	0	0	0	
	PDO	0	0	0	2	1	0	3	
3-D	Fatal	0	0	0	0	0	0	0	0
	Injury	0	0	0	0	0	0	0	
	PDO	0	0	0	0	0	0	0	
3-E	Fatal	0	0	0	0	0	0	0	1
	Injury	0	0	0	0	0	0	0	
	PDO	0	1	0	0	0	0	1	
3-F	Fatal	0	0	0	0	0	0	0	1
	Injury	0	0	0	0	0	0	0	
	PDO	0	1	0	0	0	0	1	
3-G	Fatal	0	0	0	0	0	0	0	74
	Injury	0	3	0	1	0	0	4	
	PDO	0	10	0	0	0	0	10	
3-H	Fatal	0	0	0	0	0	0	0	4
	Injury	0	0	0	0	0	0	0	
	PDO	1	1	0	1	1	0	4	
3-I	Fatal	0	0	0	0	0	0	0	50
	Injury	0	3	0	0	0	0	3	
	PDO	0	2	0	0	0	0	2	
3-J	Fatal	0	0	0	0	0	0	0	412
	Injury	1	11	0	7	4	0	23	
	PDO	1	14	0	18	8	3	44	
3-K	Fatal	0	0	0	0	0	0	0	1
	Injury	0	0	0	0	0	0	0	
	PDO	0	0	0	0	1	0	1	
3-L	Fatal	0	0	0	0	0	0	0	34
	Injury	0	1	0	1	0	0	2	
	PDO	0	0	0	2	0	0	2	
3-M	Fatal	0	0	0	0	0	0	0	144
	Injury	0	7	0	0	0	0	7	
	PDO	2	20	0	7	2	1	32	
3-N	Fatal	0	1	0	0	0	0	1	764
	Injury	1	3	0	6	1	0	11	
	PDO	2	3	1	20	3	1	30	
4-A	Fatal	0	0	0	0	0	0	0	4
	Injury	0	0	0	0	0	0	0	
	PDO	0	1	0	3	0	0	4	
4-B	Fatal	0	0	0	0	0	0	0	48
	Injury	0	2	1	0	0	0	3	
	PDO	0	0	0	0	0	0	0	
4-C	Fatal	0	0	0	0	0	0	0	21
	Injury	0	1	0	0	0	0	1	
	PDO	2	0	0	2	1	0	5	
4-D	Fatal	0	0	0	0	0	0	0	16
	Injury	0	0	0	1	0	0	1	
	PDO	0	0	0	0	0	0	0	
5-A	Fatal	0	0	0	0	0	0	0	51
	Injury	0	1	0	1	1	0	3	
	PDO	0	1	0	2	0	0	3	
5-B	Fatal	0	0	0	0	0	0	0	26
	Injury	0	0	0	1	0	0	1	
	PDO	0	1	0	8	1	0	10	
5-C	Fatal	0	0	0	0	0	0	0	344
	Injury	1	0	1	15	1	0	18	
	PDO	0	0	0	54	2	0	56	
5-D	Fatal	0	0	0	0	0	0	0	20
	Injury	0	0	0	1	0	0	1	
	PDO	0	0	0	4	0	0	4	
5-E	Fatal	0	0	0	0	0	0	0	33
	Injury	0	0	0	2	0	0	2	
	PDO	0	0	0	1	0	0	1	
5-F	Fatal	0	0	0	0	0	0	0	3
	Injury	0	0	0	0	0	0	0	
	PDO	2	0	0	0	1	0	3	
6-A	Fatal	0	0	0	0	0	0	0	1
	Injury	0	0	0	0	0	0	0	
	PDO	0	1	0	0	0	0	1	
6-B	Fatal	0	0	0	0	0	0	0	281
	Injury	1	2	3	9	1	0	16	
	PDO	1	3	0	18	3	0	25	
6-C	Fatal	0	0	0	0	0	0	0	33
	Injury	0	0	1	0	1	0	2	
	PDO	0	1	0	0	0	0	1	
6-D	Fatal	0	0	0	0	0	0	0	453
	Injury	0	2	0	21	1	0	24	
	PDO	3	2	1	56	7	0	69	
6-E	Fatal	0	0	0	0	0	0	0	0
	Injury	0	0	0	0	0	0	0	
	PDO	0	0	0	0	0	0	0	
6-F	Fatal	0	0	0	0	0	0	0	1
	Injury	0	0	0	0	0	0	0	
	PDO	0	0	0	0	1	0	1	
6-G	Fatal	0	0	0	0	0	0	0	17
	Injury	0	0	1	0	0	0	1	
	PDO	0	0	0	0	0	1	1	
6-H	Fatal	0	0	0	0	0	0	0	5
	Injury	0	0	0	0	0	0	0	
	PDO	1	0	0	4	0	0	5	
6-I	Fatal	0	0	0	0	0	0	0	0
	Injury	0	0	0	0	0	0	0	
	PDO	0	0	0	0	0	0	0	
6-J	Fatal	0	0	0	0	0	0	0	0
	Injury	0	0	0	0	0	0	0	
	PDO	0	0	0	0	0	0	0	
6-K	Fatal	0	0	0	0	0	0	0	24
	Injury	0	0	0	1	0	0	1	
	PDO	0	2	0	5	1	0	8	
6-L	Fatal	0	0	0	0	0	0	0	0
	Injury	0	0	0	0	0	0	0	
	PDO	0	0	0	0	0	0	0	
7-A	Fatal	0	0	0	0	0	0	0	21
	Injury	0	1	0	0	0	0	1	
	PDO	0	2	0	2	1	0	5	
7-B	Fatal	0	0	0	0	0	0	0	84
	Injury	0	3	0	0	2	0	5	
	PDO	0	2	0	0	2	0	4	
7-C	Fatal	0	0	0	0	0	0	0	23
	Injury	0	0	0	1	0	0	1	
	PDO	1	2	1	2	1	0	7	
7-D	Fatal	0	0	0	0	0	0	0	0
	Injury	0	0	0	0	0	0	0	
	PDO	0	0	0	0	0	0	0	
7-E	Fatal	0	0	0	0	0	0	0	0
	Injury	0	0	0	0	0	0	0	
	PDO	0	0	0	0	0	0	0	
8-A	Fatal	0	0	0	0	0	0	0	19
	Injury	0	0	0	1	0	0	1	
	PDO	0	1	0	2	0	0	3	
8-B	Fatal	0	0	0	0	0	0	0	23
	Injury	0	0	0	0	0	1	1	
	PDO	0	5	0	2	0	0	7	
8-C	Fatal	0	0	0	0	0	0	0	88
	Injury	0	1	1	3	0	0	5	
	PDO	0	3	0	3	1	1	8	
8-D	Fatal	0	0	0	0	0	0	0	3
	Injury	0	0	0	0	0	0	0	
	PDO	0	1	0	2	0	0	3	
8-E	Fatal	0	0	0	0	0	0	0	5
	Injury	0	0	0	0	0	0	0	
	PDO	0	2	1	2	0	0	5	